

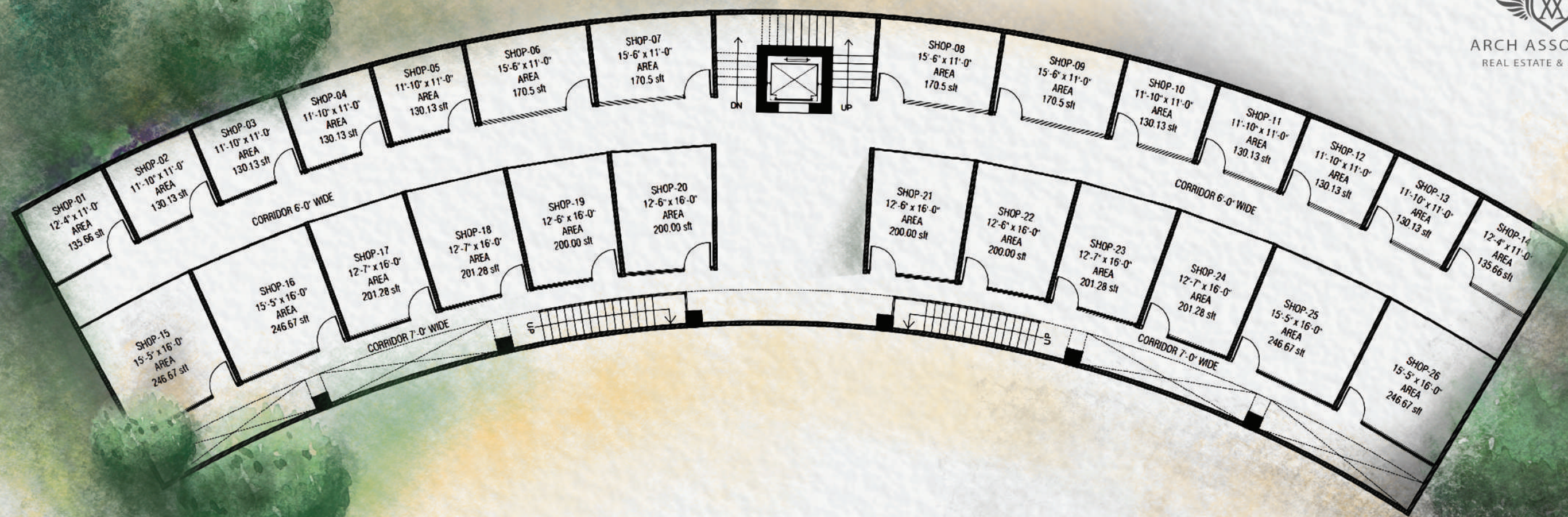
PEARL ARCADE

A PROJECT BY ARCH ASSOCIATES

PEARL ARCADE



LOWER GROUND FLOOR



COVERED AREA = 7492.53 Sft.
SALEABLE AREA = 4588.6 Sft.
CIRCULATION AREA = 2903.93 Sft.

UPGRADE

KOHISTAN ENCLAVE WAH 2 YEAR PAYMENT PLAN

SIZE (SQ FT)	130.13	135.66	170.50	200.00	201.28	246.67
DOWNPAYMENT (30%)	1,054,053	1,098,846	1,381,050	1,620,000	1,630,368	1,998,027
2 YEAR QUARTERLY INSTALLMENTS	263,513 X8	274,712 X8	345,263 X8	405,000 X8	407,592 X8	499,507 X8
	2,108,106	2,197,692	2,762,100	3,240,000	3,260,736	3,996,054
ON POSSESSION (10%)	351,351	366,282	460,350	540,000	543,456	666,009
TOTAL	3,513,510	3,662,820	4,603,500	5,400,000	5,434,560	6,660,090

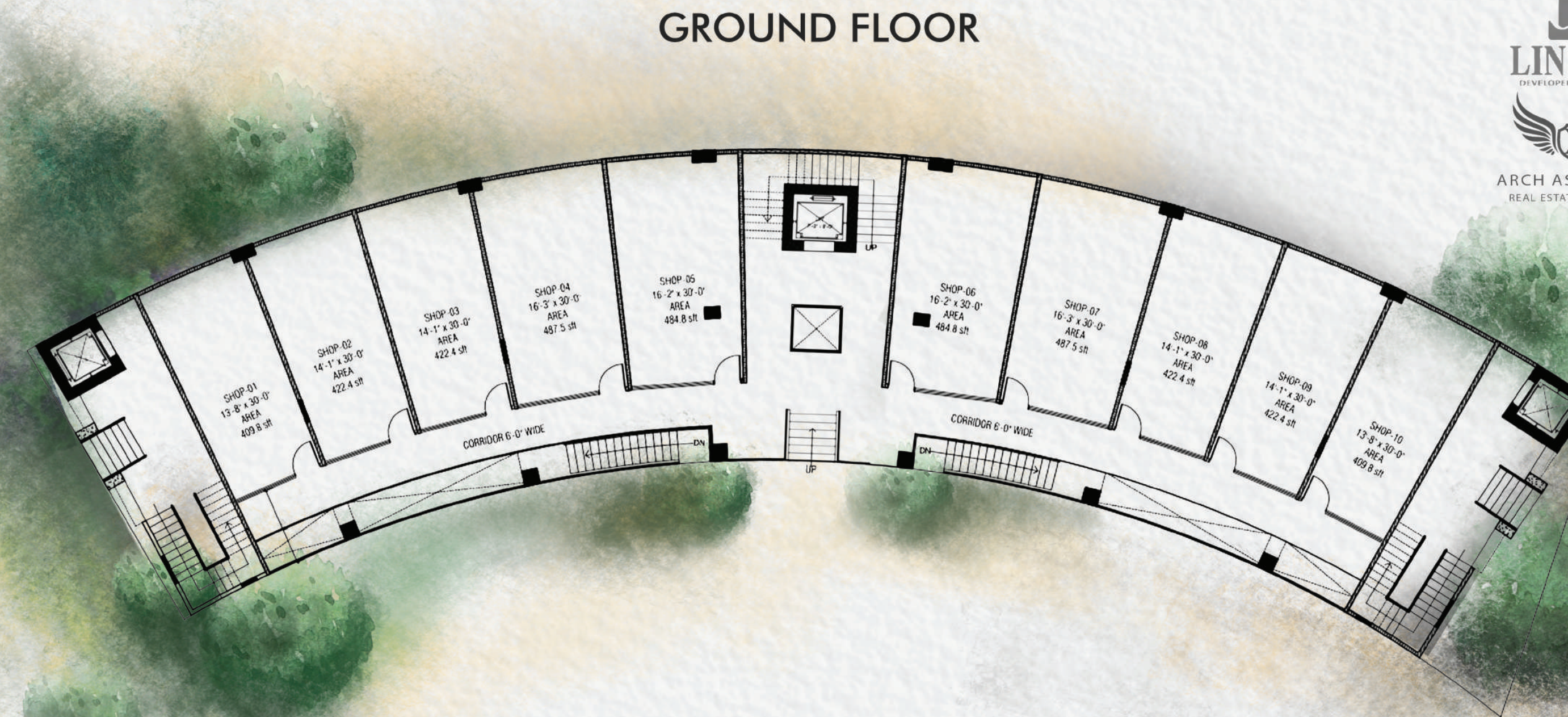
LOWER GROUND FLOOR

PEARL ARCADE

KOHI STAN ENCLAVE WAH 2 YEAR PAYMENT PLAN

GROUND FLOOR

SIZE (SQ FT)	409.80	433.40	484.80	487.50
DOWNPAYMENT (30%)	3,934,080	4,055,040	4,654,080	4,680,000
2 YEAR QUARTERLY INSTALLMENTS	983,520 X8	1,013,760 X8	1,163,520 X8	1,170,000 X8
ON POSSESSION (10%)	1,311,360	1,351,680	1,551,360	1,560,000
TOTAL	13,113,600	13,516,800	15,513,600	15,600,00



PLOT AREA = 7891.53 Sft.
 COVERED AREA = 7512.07 Sft.
 SALEABLE AREA = 4446.32 Sft.
 CIRCULATION AREA = 3065.73 Sft.





MEZZANINE FLOOR



COVERED AREA = 7439.47 Sft.
 SALEABLE AREA = 3974.36 Sft.
 CIRCULATION AREA = 3465.11 Sft.

PEARL ARCADE

KOHISTAN ENCLAVE WAH

2 YEAR PAYMENT PLAN

MEZZANINE FLOOR

SIZE (SQ FT)	159.50	165.50	190.60	235.41	249.254	251.04	287.20	288.71
DOWNPAYMENT (30%)	1,196,250	1,241,250	1,429,500	1,765,575	1,871,550	1,882,800	2,154,000	2,165,325
2 YEAR QUARTERLY INSTALLMENTS	299,063 X8	310,313 X8	375,375 X8	441,394 X8	407,592 X8	499,507 X8	407,592 X8	499,507 X8
	2,392,500	2,482,500	2,859,000	3,531,150	3,743,100	3,765,600	4,308,000	4,330,650
ON POSSESSION (10%)	398,750	413,750	476,500	588,525	623,850	627,600	718,000	721,775
TOTAL	3,987,500	4,137,500	4,765,000	5,885,250	6,238,500	6,276,000	7,180,000	7,217,750

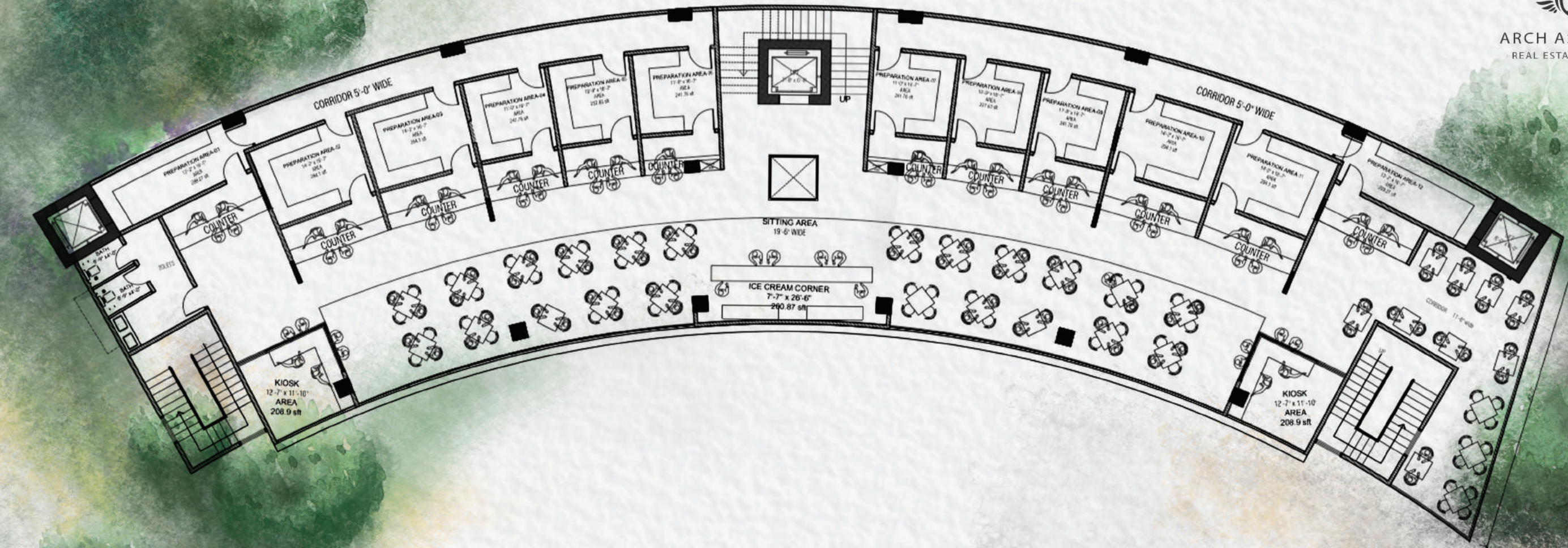
ARCADE

KOHISTAN ENCLAVE WAH 2 YEAR PAYMENT PLAN

SIZE (SQ FT)	208.90	237.63	241.78	294.10	299.27
DOWNPAYMENT (30%)	1,754,760	1,996,092	2,030,952	2,470,440	2,513,868
2 YEAR QUARTERLY INSTALLMENTS	438,690 X8	499,023 X8	507,738 X8	617,610 X8	628,467 X8
	3,509,520	3,992,184	4,061,904	4,940,880	5,027,736
ON POSSESSION (10%)	584,920	665,364	676,984	823,480	837,956
TOTAL	5,849,200	6,653,640	6,769,840	8,234,800	8,379,560

FOOD COURT

A luxurious food court located right in the center of the infrastructure to allow ease of access from top floor and ground floor.

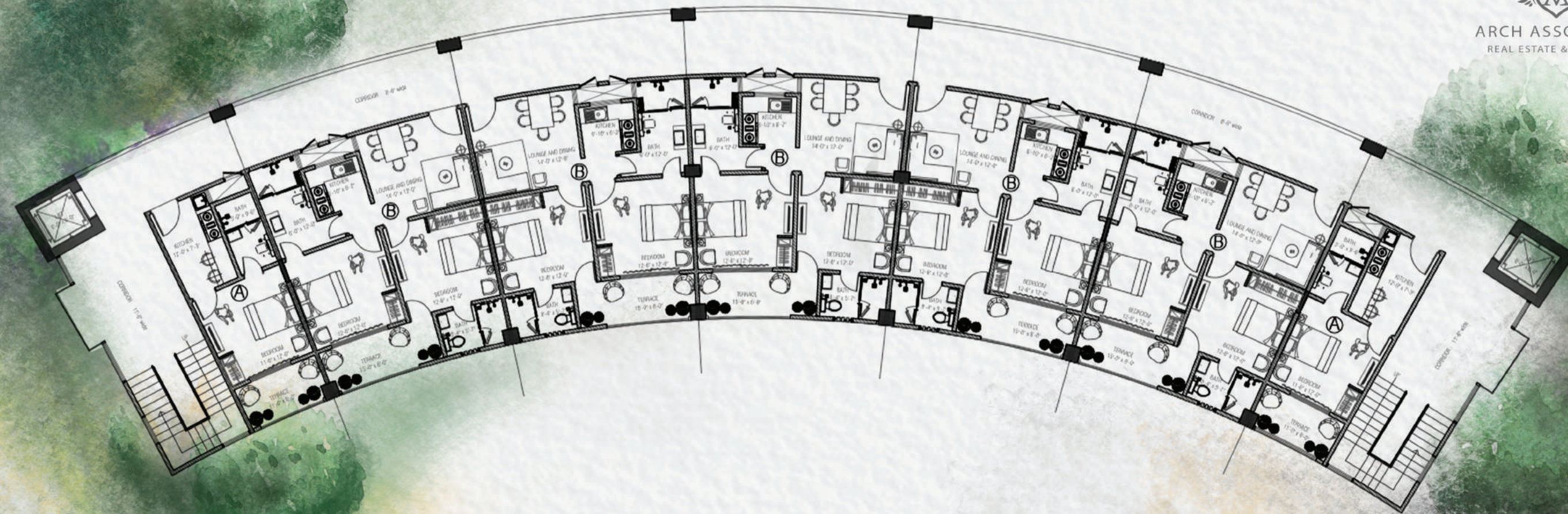


COVERED AREA = 7945.83 Sft.
 SALEABLE AREA = 3635.83 Sft.
 FLOOR SITTING AREA = 831.64 Sft.
 CIRCULATION AREA = 3478.63 Sft.



THIRD & FOURTH FLOOR

Apartment complexes start from third and fourth floor. There are two types of apartments located on these floors. One includes Type A which is one bedroom apartment, and Type B which is two bedroom apartment.



COVERED AREA = 7553.45 Sft.
 SALEABLE AREA = 4990.7 Sft.
 CIRCULATION AREA = 2562.75 Sft.

STUDIO TYPE A

STUDIO TYPE A = NET AREA (395.85 square ft.)
 STUDIO TYPE A = GROSS AREA (486.89 square ft.)
 NO.OF APARTMENT STUDIO TYPE A = 06

STUDIO TYPE B

STUDIO TYPE B = NET AREA (839.80 square ft.)
 STUDIO TYPE B = GROSS AREA (1032.95 square ft.)
 NO.OF APARTMENT STUDIO TYPE B = 15



ARCH ASSOCIATES
 REAL ESTATE & BUILDERS

SIZE (SQ FT)	486.89	1,032.95
TYPE	TYPE A	TYPE B
DOWNPAYMENT (30%)	1,095,503	2,324,138
2 YEAR QUARTERLY INSTALLMENTS	273,876 X8	581,034 X8
	2,191,005	4,648,275
ON POSSESSION (10%)	365,168	774,713
TOTAL	3,651,675	7,747,125

DEER
 GROVE

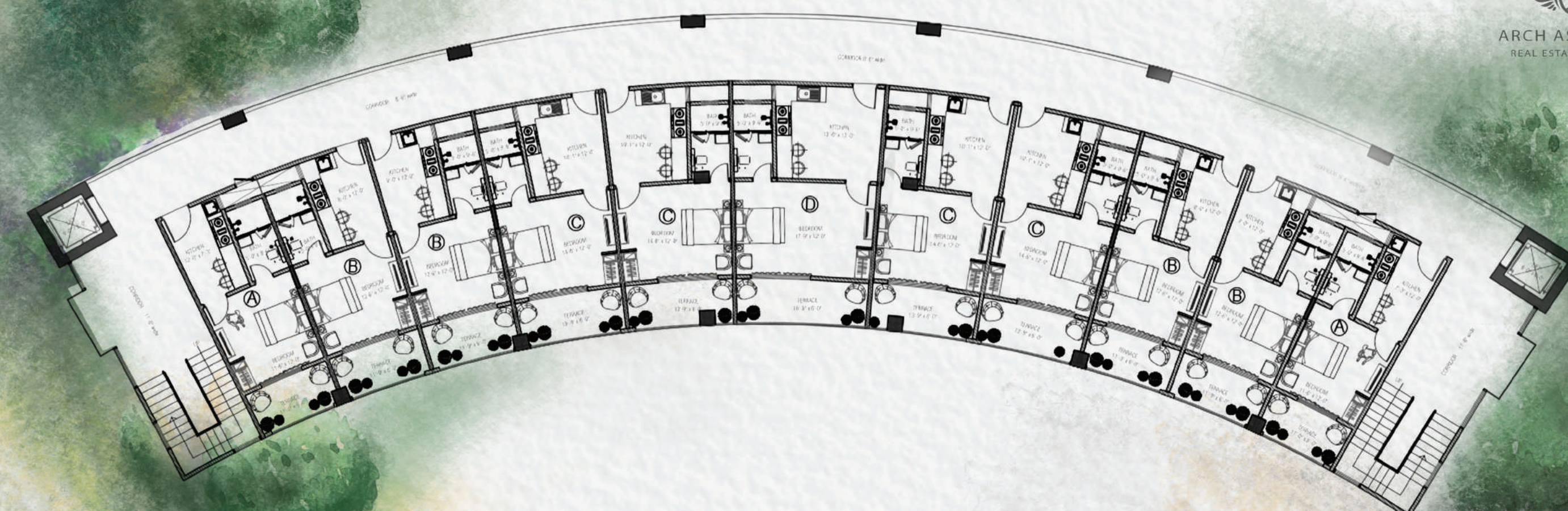
KOHISTAN ENCLAVE WAH
 2 YEAR PAYMENT PLAN

THIRD AND FOURTH FLOOR

PEARL ARCADE

KOHISTAN ENCLAVE WAH 2 YEAR PAYMENT PLAN

SIZE (SQ FT)	486.89	518.50	590.02	720.18
TYPE	TYPE A	TYPE B	TYPE C	TYPE D
DOWNPAYMENT (30%)	1,095,503	1,166,625	1,327,545	1,620,405
2 YEAR QUARTERLY INSTALLMENTS	273,876 X8	291,656 X8	331,886 X8	405,101 X8
	2,191,005	2,333,250	2,655,090	3,240,810
ON POSSESSION (10%)	365,168	388,875	442,515	540,135
TOTAL	3,651,675	3,888,750	4,425,150	5,401,350



FIFTH FLOOR

The top floor contains mainly studio apartments with varying sizes. These one bedroom apartments encompass a luxury interior with open plan setup.

COVERED AREA = 7553.45 Sft.
 SALEABLE AREA = 4982.94 Sft.
 CIRCULATION AREA = 2570.51 Sft.

STUDIO TYPE A
 STUDIO TYPE A = NET AREA (395.85 square ft.)
 STUDIO TYPE A = GROSS AREA (486.89 square ft.)
 NO. OF APARTMENT STUDIO TYPE A = 02

STUDIO TYPE B
 STUDIO TYPE B = NET AREA (421.56 square ft.)
 STUDIO TYPE B = GROSS AREA (518.5 square ft.)
 NO. OF APARTMENT STUDIO TYPE B = 04


STUDIO TYPE C
 STUDIO TYPE C = NET AREA (479.87 square ft.)
 STUDIO TYPE C = GROSS AREA (590.02 square ft.)
 NO. OF APARTMENT STUDIO TYPE C = 04

STUDIO TYPE D
 STUDIO TYPE D = NET AREA (585.52 square ft.)
 STUDIO TYPE D = GROSS AREA (720.18 square ft.)
 NO. OF APARTMENT STUDIO TYPE D = 01



www.linersint.com



 +92 317 1000006